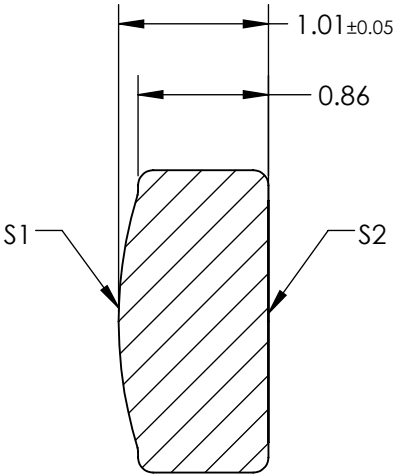
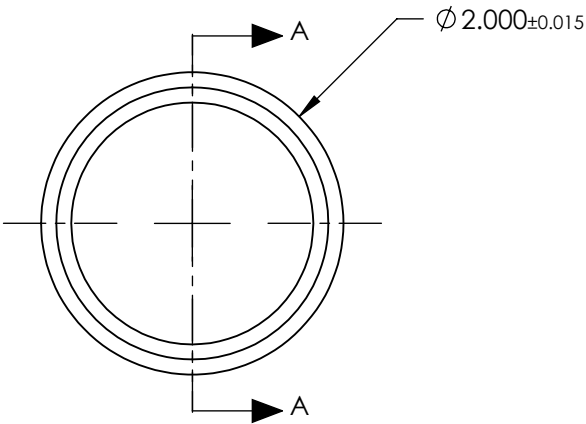


NOTES:

- 1. SUBSTRATE:  
D-ZK3
- 2. NUMERICAL APERTURE: 0.15
- 3. COATING  
S1 & S2: R(AVG) < 1.0% @ 600 - 1050nm
- 4. FOCAL LENGTH TOLERANCE: ±1%


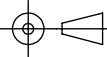


SECTION A-A

**FOR INFORMATION ONLY:  
DO NOT MANUFACTURE  
PARTS TO THIS DRAWING**

SPECIFICATIONS SUBJECT TO CHANGE WITHOUT NOTICE DIMENSIONS ARE FOR REFERENCE ONLY

	S1	S2
SHAPE	CONVEX	PLANO
SURFACE QUALITY	40-20	40-20
CLEAR APERTURE	Ø1.50	Ø1.50
BEVEL MAX	PROTECTIVE AS NEEDED	PROTECTIVE AS NEEDED

EFL	5.00	 <b>Edmund Optics®</b>	
BFL	4.37		
THIRD ANGLE PROJECTION 	TITLE	0.15 NA 5.00mm FL NIR AR COATED, MOLDED ASPHERIC LENS	
ALL DIMS IN mm	DWG NO	48145	SHEET 1 OF 1