

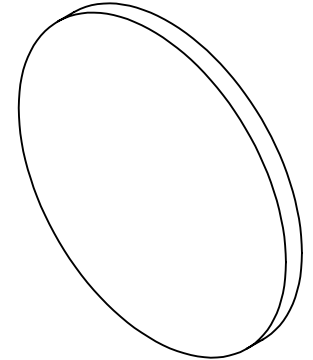
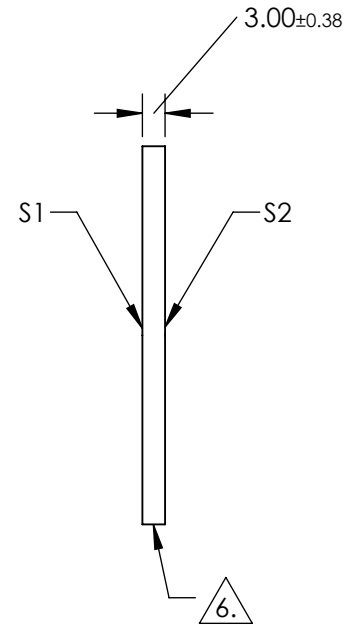
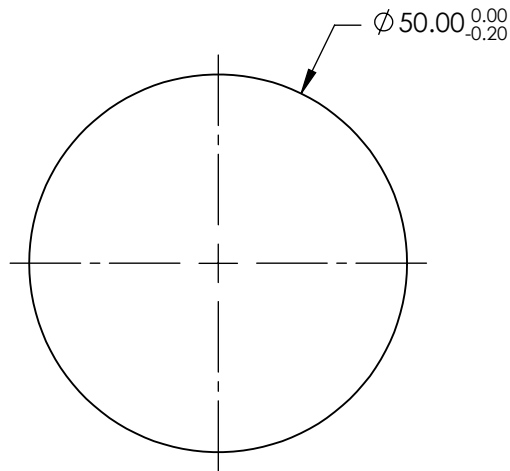
NOTES:

1. SUBSTRATE: Fused Silica (Corning 7980)
2. ROHS: COMPLIANT
3. SURFACE S2 TO BE PARALLEL TO SURFACE S1 TO WITHIN <5 ARCMIN
4. COATING (APPLY ACROSS CLEAR APERTURE)

S1&S2: R(ABS) ≤0.25% @ 880nm  
 R(AVG) ≤1.25% @ 400 - 870nm  
 R(AVG) ≤1.25% @ 890 - 1000nm

5. TRANSMITTED WAVEFRONT DISTORTION: ≤ 1λ

6. FINE GRIND SURFACE

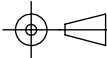


**FOR INFORMATION ONLY:  
 DO NOT MANUFACTURE  
 PARTS TO THIS DRAWING**

SPECIFICATIONS SUBJECT TO CHANGE WITHOUT NOTICE  
 DIMENSIONS ARE FOR REFERENCE ONLY

	S1	S2
SHAPE	PLANO	PLANO
SURFACE QUALITY	60-40	60-40
CLEAR APERTURE	∅ 45.00	∅ 45.00
BEVEL	PROTECTED AS NEEDED	PROTECTED AS NEEDED

THIRD ANGLE PROJECTION



ALL DIMS IN

mm

**EO**® Edmund Optics®

TITLE

50mm Dia., 3mm Thick VIS-NIR Coated, 1λ  
 Fused Silica Window

DWG NO

19891

SHEET  
 1 OF 1