

NOTES:

- SUBSTRATE MATERIAL:
FUSED SILICA
- SURFACE S2 TO BE PARALLEL TO SURFACE S1 < 3 ARCSEC
- COATING (APPLY ACROSS COATING APERTURE)
S1: ULTRAFAST LASER
Rs >99.75% @ 500 - 530nm
Rp >99.5% @ 500 - 530nm

S2: NONE

DAMAGE THRESHOLD, PULSED:

0.17 J/cm² @ 515nm, 178fs, 1 pulse (typical)

0.15 J/cm² @ 515nm, 178fs, 10kHz, 1000 pulses (typical)

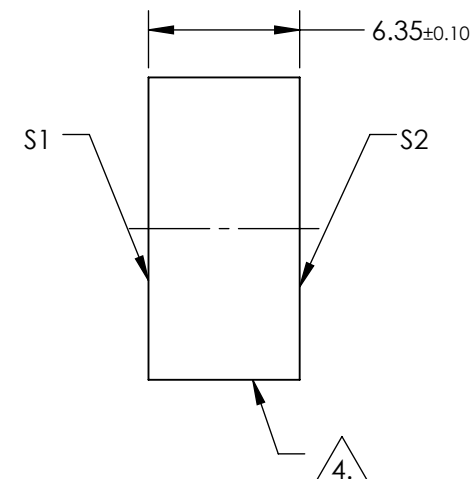
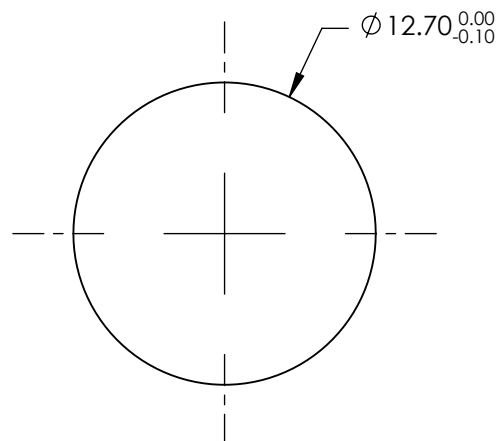
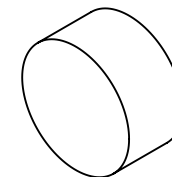
GROUP DELAY DISPERSION:

S-pol: 0 ±20fs² @ 500 - 530nm

P-pol: 0 ±20fs² @ 500 - 530nm

4. FINE GROUND SURFACE

5. RoHS: COMPLIANT



**FOR INFORMATION ONLY:
DO NOT MANUFACTURE
PARTS TO THIS DRAWING**

SPECIFICATIONS SUBJECT TO CHANGE WITHOUT NOTICE
DIMENSIONS ARE FOR REFERENCE ONLY

	S1	S2
SHAPE	PLANO	PLANO
SURFACE FLATNESS	$\lambda/8$	N/A
SURFACE QUALITY	20-10	COMMERCIAL POLISH
CLEAR APERTURE (%)	11.43	N/A
BEVEL	PROTECTIVE AS NEEDED	PROTECTIVE AS NEEDED



ALL DIMS IN

mm

EO® Edmund Optics®

TITLE

500 - 530nm, 12.7mm Dia., Ultrafast Mirror

DWG NO

17551

SHEET
1 OF 1