

NOTES:

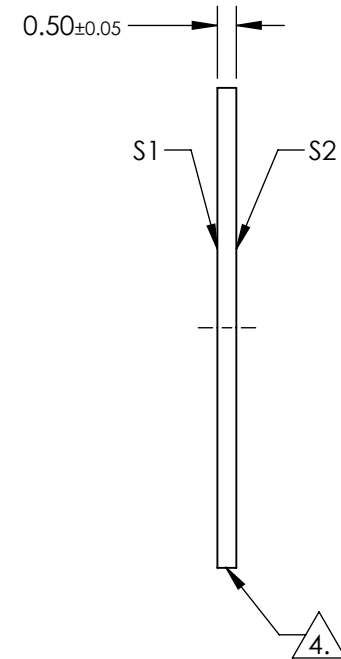
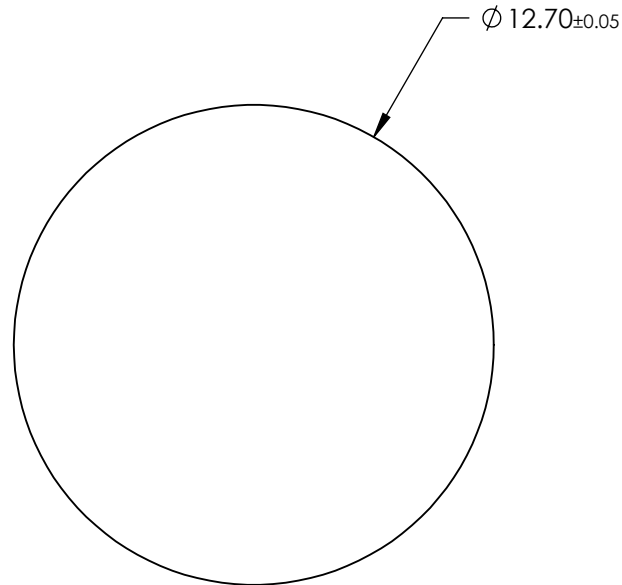
1. SUBSTRATE:  
Sapphire (Al<sub>2</sub>O<sub>3</sub>)
2. SURFACE S2 TO BE PARALLEL WITH SURFACE S1 TO WITHIN ≤3.5 ARCMIN
3. COATING (APPLY ACROSS CLEAR APERTURE)

S1 & S2: NONE

4. FINE GRIND SURFACE

5. ROHS COMPLIANT

**FOR INFORMATION ONLY:  
DO NOT MANUFACTURE  
PARTS TO THIS DRAWING**



REV. A	S1	S2
SHAPE	PLANO	PLANO
CLEAR APERTURE	$\phi 11.43$	$\phi 11.43$
SURFACE FLATNESS	$2\lambda$ (typical)	$2\lambda$ (typical)
SURFACE ROUGHNESS	$\leq 0.1 \mu\text{m}$ PER INCH	$\leq 0.1 \mu\text{m}$ PER INCH
SURFACE QUALITY	80-50	80-50
BIREFRINGENCE (no-ne)	0.008	0.008
BEVEL	PROTECTED AS NEEDED	PROTECTED AS NEEDED

SPECIFICATIONS SUBJECT TO CHANGE WITHOUT NOTICE  
DIMENSIONS ARE FOR REFERENCE ONLY

**EO**® **Edmund Optics**®



TITLE	12.7mm Dia., 0.5mm Thick, Uncoated, Sapphire Window	
DWG NO	17222	SHEET 1 OF 1

ALL DIMS IN

mm