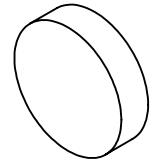


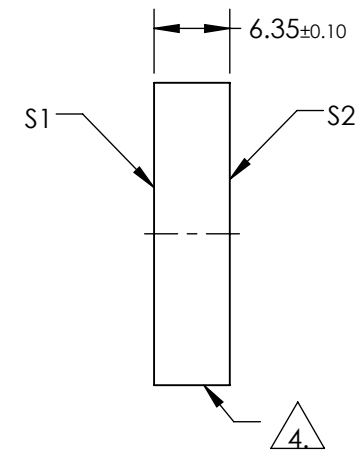
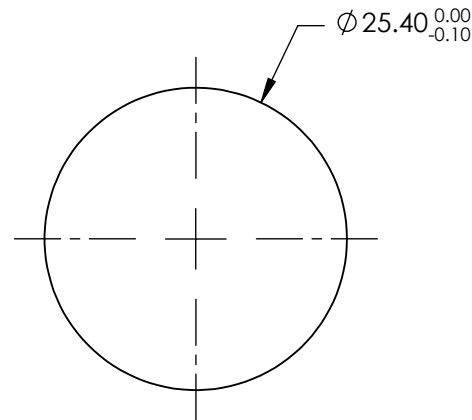
NOTES:

1. SUBSTRATE MATERIAL:  
FUSED SILICA
2. SURFACE S2 TO BE PARALLEL TO SURFACE S1 <10 ARCSEC
3. COATING (APPLY ACROSS COATING APERTURE)  
S1: ULTRAFAST LASER  
Rs >99.95% @ 1000 - 1060nm  
Rp >99.9% @ 1000 - 1060nm  
  
S2: NONE  
  
DAMAGE THRESHOLD,  
PULSED: >0.1 J/cm<sup>2</sup> @ 1030nm, 100fs  
  
GROUP DELAY DISPERSION: 0 ±20fs<sup>2</sup> @ 1000 - 1060nm



4. FINE GROUND SURFACE

5. RoHS: COMPLIANT



**FOR INFORMATION ONLY:  
DO NOT MANUFACTURE  
PARTS TO THIS DRAWING**

SPECIFICATIONS SUBJECT TO CHANGE WITHOUT NOTICE  
DIMENSIONS ARE FOR REFERENCE ONLY

	S1	S2
SHAPE	PLANO	PLANO
SURFACE FLATNESS	λ/8	N/A
SURFACE QUALITY	10-5	COMMERCIAL POLISH
CLEAR APERTURE (%)	>80	N/A
BEVEL	PROTECTIVE AS NEEDED	PROTECTIVE AS NEEDED



ALL DIMS IN

mm

**EO**® **Edmund Optics**®

TITLE

1000 - 1060nm, 25.4mm Dia., Low GDD  
Ultrafast Mirror

DWG NO

14846

SHEET  
1 OF 1