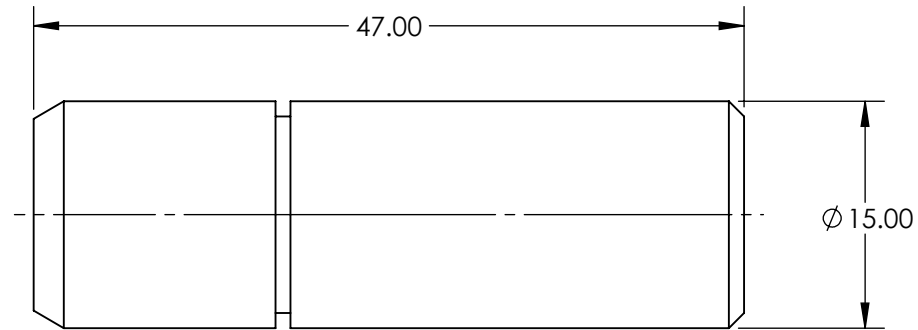


NOTES:
1. RoHS: COMPLIANT



**FOR INFORMATION ONLY:
DO NOT MANUFACTURE
PARTS TO THIS DRAWING**

SPECIFICATIONS SUBJECT TO CHANGE WITHOUT NOTICE
DIMENSIONS ARE FOR REFERENCE ONLY

DESIGN WAVELENGTH (nm)	635
OUTPUT POWER (mW)	4
BEAM DAIAMTER (mm)	2
FOCUS RANGE	20mm - ∞
COLOR	RED
LASER CLASS - CDRH	IIIa
MEAN TIME TO FAILURE @ 25° (HOURS)	>15,000
POINTING ACCURACY (mrad)	≤5
POWER REQUIREMENT	5V DC ±5%
TYPE	DIODE
WAVELENGTH STABILITY (nm/°C)	0.25

THIRD ANGLE
PROJECTION 

ALL DIMS IN

mm

 **Edmund Optics®**

TITLE

4mW 635nm Circular, Premier Laser Diode

DWG NO

57106

SHEET
1 OF 1