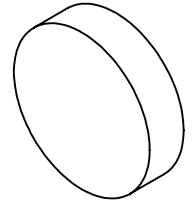


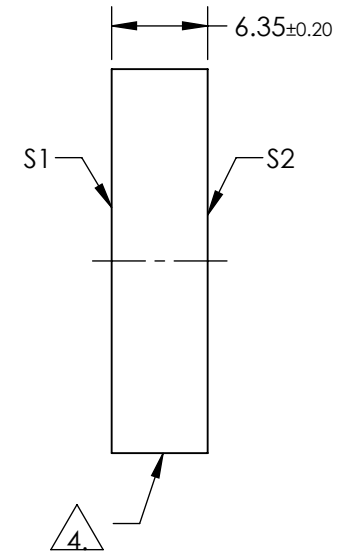
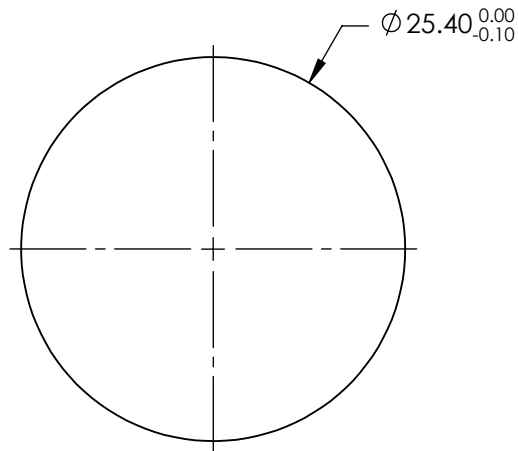
NOTES:

1. SUBSTRATE: FUSED SILICA
2. SURFACE S2 TO BE PARALLEL TO SURFACE S1 TO WITHIN 5.0 ARCMIN
3. COATING (APPLY ACROSS COATING APERTURE)  
 S1: R(AVG) > 99% @ 600-1000 nm @ 0° AOI  
 Rs > 99% @ 540-1000 nm @ 45° AOI  
 Rp > 98.5% @ 730-870 nm @ 45° AOI  
  
 GDD: 0±20 fs<sup>2</sup> @ 600-1050nm @ 0° AOI  
  
 S2: NONE



4. FINE GRIND SURFACE

5. RoHS: COMPLIANT



**FOR INFORMATION ONLY:  
DO NOT MANUFACTURE  
PARTS TO THIS DRAWING**

SPECIFICATIONS SUBJECT TO CHANGE WITHOUT NOTICE  
DIMENSIONS ARE FOR REFERENCE ONLY

	S1	S2
SHAPE	PLANO	PLANO
SURFACE QUALITY	10-5	COMMERCIAL POLISH
SURFACE FLATNESS	λ/10	N/A
CLEAR APERTURE	Ø22.86	N/A
BEVEL	PROTECTIVE AS NEEDED	PROTECTIVE AS NEEDED



ALL DIMS IN

mm



TITLE 600 - 1050nm, 25.4mm Dia. Ultrafast-Enhanced Silver Laser Mirror

DWG NO 13060 SHEET 1 OF 1