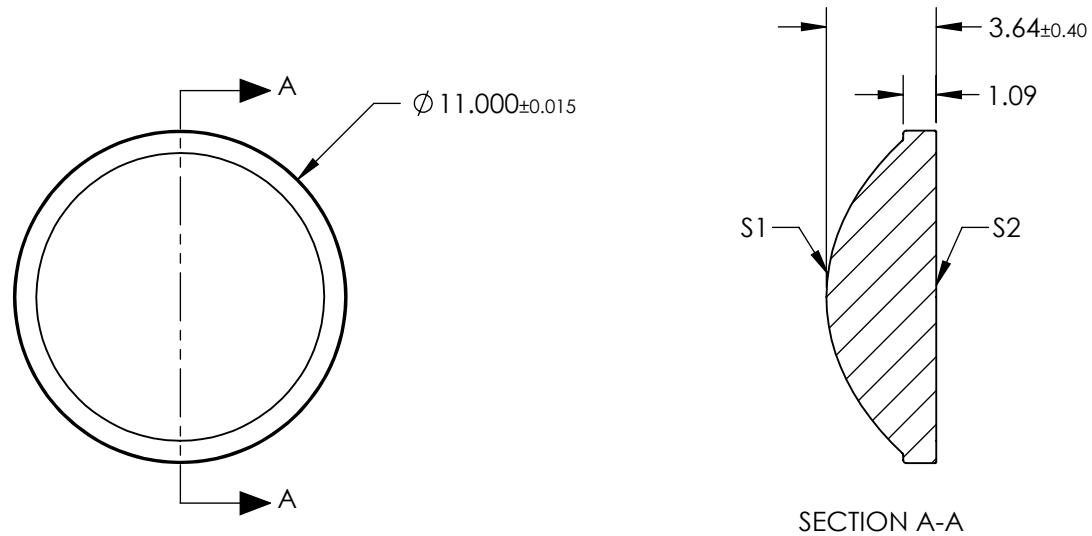


NOTES:

1. SUBSTRATE:
D-ZK3
2. NUMERICAL APERTURE: 0.5
3. COATING
S1 & S2: R (ABS) < 1.0% @ 600 - 1050nm
4. FOCAL LENGTH TOLERANCE: ±1%
5. TRANSMITTED WAVEFRONT ERROR (λ , RMS): < 0.087



**FOR INFORMATION ONLY:
DO NOT MANUFACTURE
PARTS TO THIS DRAWING**

SPECIFICATIONS SUBJECT TO CHANGE WITHOUT NOTICE
DIMENSIONS ARE FOR REFERENCE ONLY

	S1	S2	EFL	10.00	Edmund Optics®	TITLE 0.50 NA 10.0mm FL 600-1050nm AR Coated, Molded Aspheric Lens	
			WD	7.80			
SHAPE	CONVEX	PLANO	THIRD ANGLE PROJECTION		DWG NO	33426	SHEET 1 OF 1
SURFACE QUALITY	60-40	60-40	ALL DIMS IN	mm			
CLEAR APERTURE	Ø10.00	Ø10.00					
BEVEL	PROTECTIVE AS NEEDED	PROTECTIVE AS NEEDED					