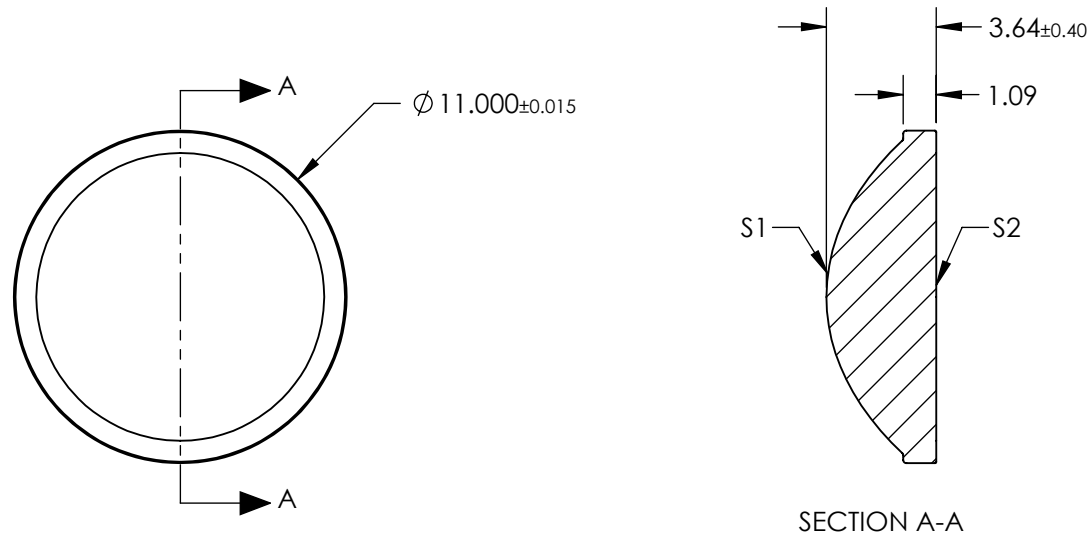



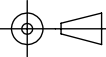
NOTES:

1. SUBSTRATE:  
D-ZK3
2. NUMERICAL APERTURE: 0.5
3. COATING  
S1 & S2: R (AVG)  $\leq 0.5\%$  @ 350 - 700nm
4. FOCAL LENGTH TOLERANCE:  $\pm 1\%$
5. TRANSMITTED WAVEFRONT ERROR ( $\lambda$ , RMS):  $< 0.087$



**FOR INFORMATION ONLY:  
DO NOT MANUFACTURE  
PARTS TO THIS DRAWING**

SPECIFICATIONS SUBJECT TO CHANGE WITHOUT NOTICE  
DIMENSIONS ARE FOR REFERENCE ONLY

	S1	S2	EFL	10.00	 <b>Edmund Optics®</b>	
			BFL	7.80		
SHAPE	CONVEX	PLANO			TITLE	0.50 NA 10.0mm FL 350-700nm AR Coated, Molded Aspheric Lens
SURFACE QUALITY	60-40	60-40			ALL DIMS IN	mm
CLEAR APERTURE	Ø10.00	Ø10.00				SHEET 1 OF 1
BEVEL	PROTECTIVE AS NEEDED	PROTECTIVE AS NEEDED				