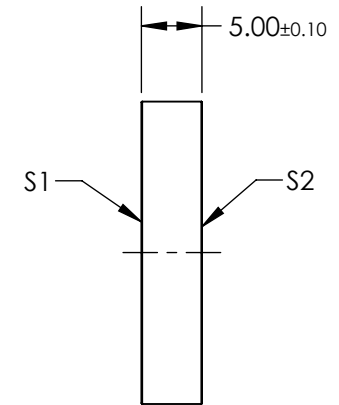
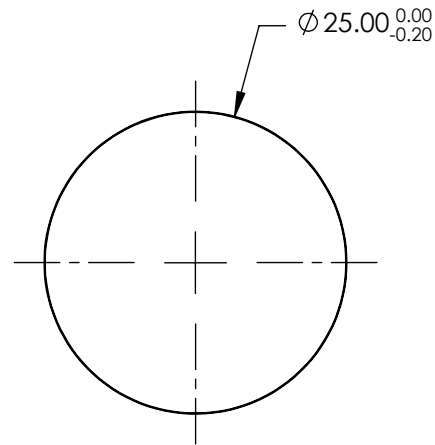


NOTES:

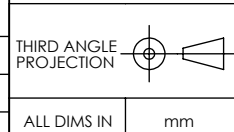
1. SUBSTRATE:  
FUSED SILICA
2. SURFACE S2 TO BE PARALLEL TO SURFACE S1 TO WITHIN <5 ARCSEC
3. COATING (APPLY ACROSS COATING APERTURE):  
S1 & S2: NIR II (750-1550nm)  
R(ABS) ≤1.5% @ 750 - 800nm  
R(ABS) ≤1.0% @ 800 - 1550nm  
R(AVG) ≤0.7% @ 750 - 1550nm
4. WAVELENGTH RANGE: 750 - 1550nm



**FOR INFORMATION ONLY:  
DO NOT MANUFACTURE  
PARTS TO THIS DRAWING**

SPECIFICATIONS SUBJECT TO CHANGE WITHOUT NOTICE  
DIMENSIONS ARE FOR REFERENCE ONLY

|                             | S1                   | S2                   |
|-----------------------------|----------------------|----------------------|
| SHAPE                       | PLANO                | PLANO                |
| SURFACE QUALITY             | 20-10                | 20-10                |
| TRANSMITTED WAVEFRONT (P-V) | 0.10 WAVE            | 0.10 WAVE            |
| CLEAR APERTURE              | Ø20.00               | Ø20.00               |
| BEVEL                       | PROTECTIVE AS NEEDED | PROTECTIVE AS NEEDED |



**EO**® **Edmund Optics**®

|        |  |       |        |
|--------|--|-------|--------|
| TITLE  | 25mm Dia., 5mm Thick, NIR II Coated $\lambda/10$ Fused Silica Window |       |        |
| DWG NO | 11903  | SHEET | 1 OF 1 |