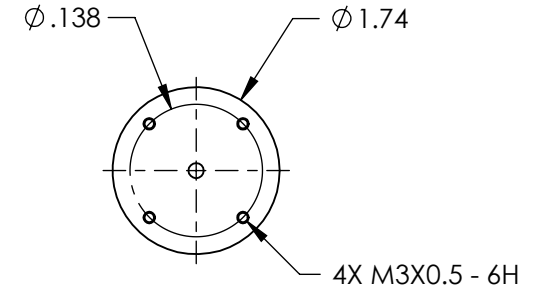
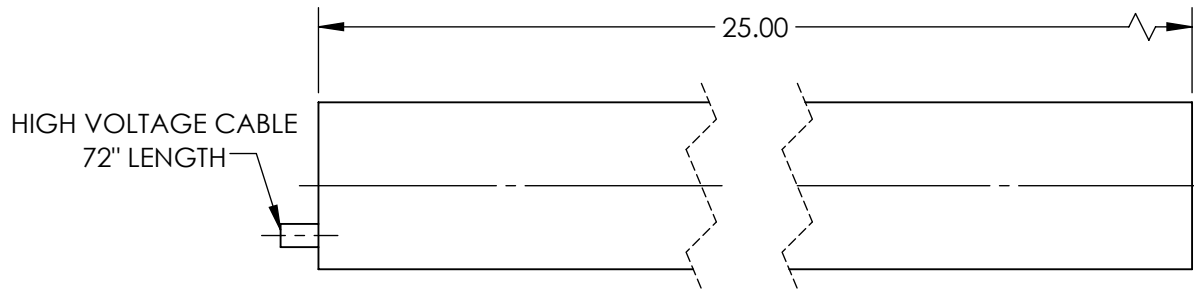


NOTES:
1. RoHS: EXEMPT

**FOR INFORMATION ONLY:
DO NOT MANUFACTURE
PARTS TO THIS DRAWING**



	VALUE
WEIGHT (lbs)	2.6
WARM-UP TIME	20
RMS NOISE	30 Hz - 10 MHz: 0.5%
OPERATING TEMPERATURE (°C)	-40 to +70
OPERATING HUMIDITY	0 TO 100%, NON-CONDENSING
MODE PURITY (TEM00)	>95%
MINIMUM OUTPUT POWER, TEM00 (mW)	15
MAXIMUM DRIFT	MEAN POWER OVER 8 HRS: ±2
LONGITUDINAL MODE SPACING, NOMINAL (MHz)	257
LASER CLASS - CDRH	IIIb
COLOR	RED
POINTING STABILITY AFTER WARM UP (mrad/°C)	AFTER 15 MIN.: <0.3
POINTING STABILITY (mrad/°C)	FROM COLD START, 25°: <0.2
OUTPUT POWER (mW)	15
BEAM DIAMETER (mm)	0.7
BEAM DIVERGENCE (mrad)	1.15 ± 3
POLARIZATION	500:1
STATIC ALIGNMENT	CENTERED TO OUTER CYLINDER: ±0.01" PARALLEL TO OUTER CYLINDER: ±1.0 MRAD

SPECIFICATIONS SUBJECT TO CHANGE WITHOUT NOTICE
DIMENSIONS ARE FOR REFERENCE ONLY

EO® **Edmund Optics**®



ALL DIMS IN

mm

TITLE

Model 1144P, 15mW Linear Polarization,
Lumentum HeNe Laser

DWG NO

62729

SHEET
1 OF 1