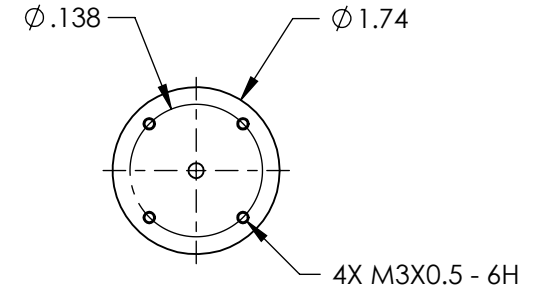
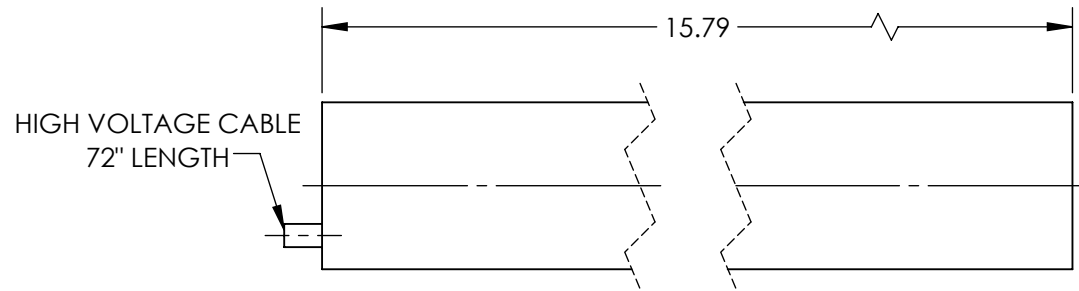


NOTES:
1. RoHS: EXEMPT

**FOR INFORMATION ONLY:
DO NOT MANUFACTURE
PARTS TO THIS DRAWING**



	VALUE
WEIGHT (lbs)	1.3
WARM-UP TIME	10
RMS NOISE	30 Hz - 10 MHz: 0.2%
OPERATING TEMPERATURE (°C)	-40 to +70
OPERATING HUMIDITY	0 TO 100%, NON-CONDENSING
MODE PURITY (TEM00)	>95%
MINIMUM OUTPUT POWER, TEM00 (mW)	7
MAXIMUM DRIFT	MEAN POWER OVER 8 HRS: ± 2.5
LONGITUDINAL MODE SPACING, NOMINAL (MHz)	435
LASER CLASS - CDRH	IIIb
COLOR	RED
POINTING STABILITY AFTER WARM UP (mrad/°C)	AFTER 15 MIN: <0.02
POINTING STABILITY (mrad/°C)	FROM COLD START, 25°: <0.1
OUTPUT POWER (mW)	7
BEAM DIAMETER (mm)	0.81
BEAM DIVERGENCE (mrad)	1.00 ± 3
POLARIZATION	500:1
STATIC ALIGNMENT	CENTERED TO OUTER CYLINDER: ± 0.01 " PARALLEL TO OUTER CYLINDER: ± 1.0 MRAD

SPECIFICATIONS SUBJECT TO CHANGE WITHOUT NOTICE
DIMENSIONS ARE FOR REFERENCE ONLY

EO® **Edmund Optics**®



THIRD ANGLE
PROJECTION

TITLE

Model 1137P, 7mW Linear Polarization,
Lumentum HeNe Laser

ALL DIMS IN

mm

DWG NO

62725

SHEET
1 OF 1