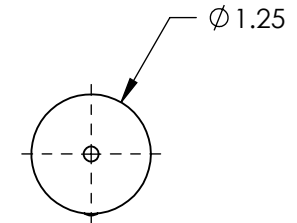
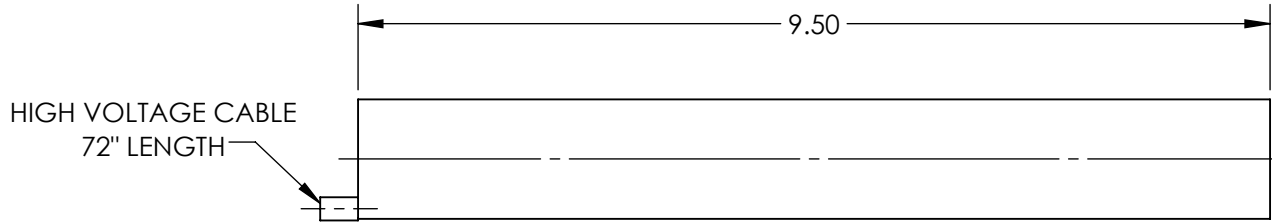


NOTES:  
1. RoHS: EXEMPT

**FOR INFORMATION ONLY:  
DO NOT MANUFACTURE  
PARTS TO THIS DRAWING**



	VALUE
WEIGHT (lbs)	0.54
WARM-UP TIME	10
RMS NOISE	30 Hz - 10 MHz: 0.1%
OPERATING TEMPERATURE (°C)	-40 to +70
OPERATING HUMIDITY	0 TO 100%, NON-CONDENSING
MODE PURITY (TEM00)	>95%
MINIMUM OUTPUT POWER, TEM00 (mW)	1.5
MAXIMUM DRIFT	MEAN POWER OVER 8 HRS: ±2.5
LONGITUDINAL MODE SPACING, NOMINAL (MHz)	730
LASER CLASS - CDRH	IIIa
COLOR	RED
POINTING STABILITY AFTER WARM UP (mrad/°C)	N/A
POINTING STABILITY (mrad/°C)	N/A
OUTPUT POWER (mW)	1.5
BEAM DIAMETER (mm)	0.63
BEAM DIVERGENCE (mrad)	1.30 ± 3
POLARIZATION	RANDOM
STATIC ALIGNMENT	CENTERED TO OUTER CYLINDER: ±0.01" PARALLEL TO OUTER CYLINDER: ±1.0 MRAD

SPECIFICATIONS SUBJECT TO CHANGE WITHOUT NOTICE  
DIMENSIONS ARE FOR REFERENCE ONLY

**EO**® Edmund Optics®



THIRD ANGLE  
PROJECTION

TITLE

Model 1101, 1.5mW Random Polarization,  
Lumentum HeNe Laser

ALL DIMS IN

mm

DWG NO

62718

SHEET  
1 OF 1