

NOTES:

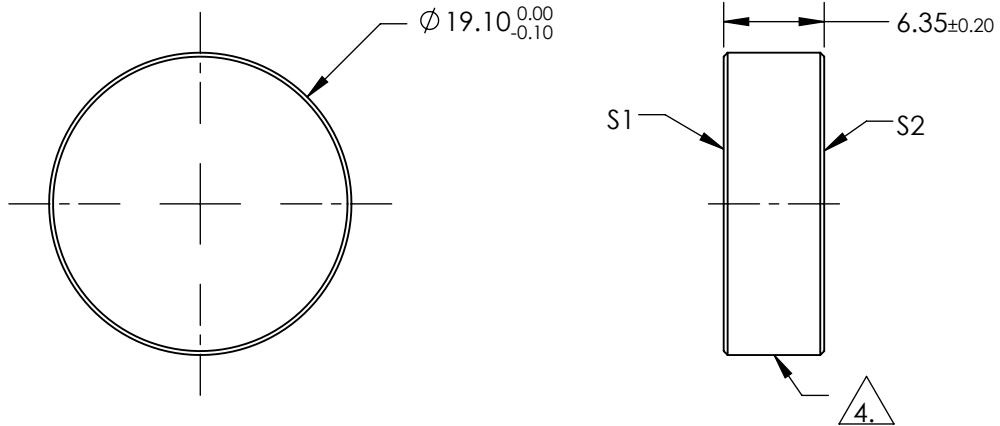
1. SUBSTRATE:
FUSED SILICA
2. SURFACE S2 TO BE PARALLEL TO S1 TO WITHIN <3 ARCMIN
3. COATING (APPLY ACROSS COATING APERTURE)

S1: R(AVG) ≥ 98% @ 340-488nm @ 0° AOI
 R(AVG) ≥ 98% @ 320-450nm @ 45° AOI FOR ALL POLARIZATION
 R(AVG) ≥ 98% @ 320-450nm @ 45° FOR S-POLARIZATION

S2: NONE

4. FINE GRIND SURFACE

5. ROHS COMPLIANT



**FOR INFORMATION ONLY:
 DO NOT MANUFACTURE
 PARTS TO THIS DRAWING**

SPECIFICATIONS SUBJECT TO CHANGE WITHOUT NOTICE
 DIMENSIONS ARE FOR REFERENCE ONLY

	S1	S2
SHAPE	PLANO	PLANO
SURFACE QUALITY	10-5	COMMERCIAL POLISH
SURFACE FLATNESS	$\lambda/10$	N/A
MIN CLEAR APERTURE	Ø17.19	N/A
BEVEL	PROTECTIVE AS NEEDED	PROTECTIVE AS NEEDED

THIRD ANGLE PROJECTION

ALL DIMS IN mm

EO® Edmund Optics®

TITLE MIRROR BROADBAND 320-450nm 38.1mm DIA

DWG NO 39218

SHEET 1 OF 1