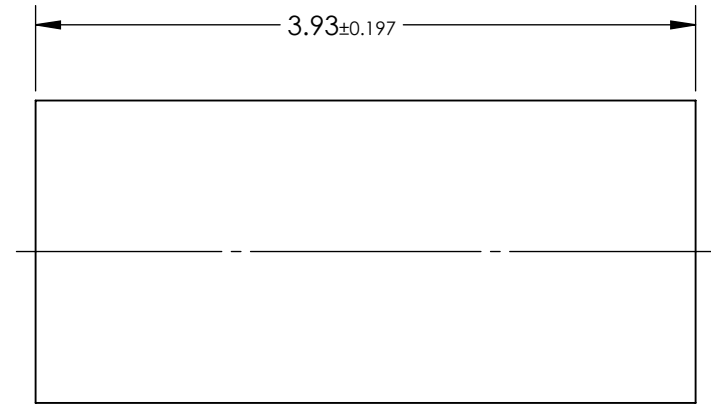
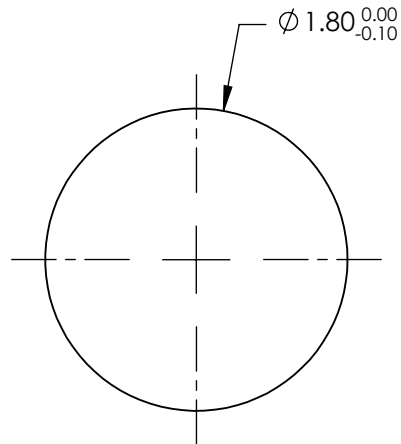


NOTES:

1. SUBSTRATE:  
Alumoscilate Glass Embedded with Silver Ions
2. COATING (APPLY ACROSS COATING APERTURE)  
S1 & S2: BBAR (640-700nm)  
R(AVG) < 0.5% @ 670nm ±30nm
3. EFL: 1.71
4. f/# : 0.95
5. NUMERICAL APERTURE: 0.52
6. DESIGN WAVELENGTH: 670nm
7. WORKING DISTANCE: 0.23mm
8. ROHS: COMPLIANT



**FOR INFORMATION ONLY:  
DO NOT MANUFACTURE  
PARTS TO THIS DRAWING**

SPECIFICATIONS SUBJECT TO CHANGE WITHOUT NOTICE  
DIMENSIONS ARE FOR REFERENCE ONLY

**EO**® **Edmund Optics**®

	S1	S2	THIRD ANGLE PROJECTION		TITLE	1.8mm Dia, 670nm DWL, 0.23mm WD, VIS Coated, GRIN Lens	
SHAPE	PLANO	PLANO	ALL DIMS IN	mm	DWG NO	64538	SHEET 1 OF 1
SURFACE QUALITY	40-20	40-20					
CLEAR APERTURE	Ø1.62	Ø1.62					