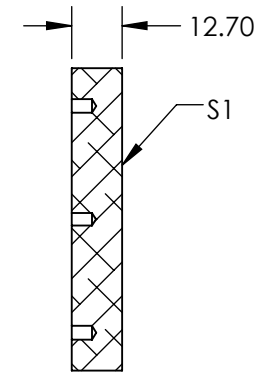
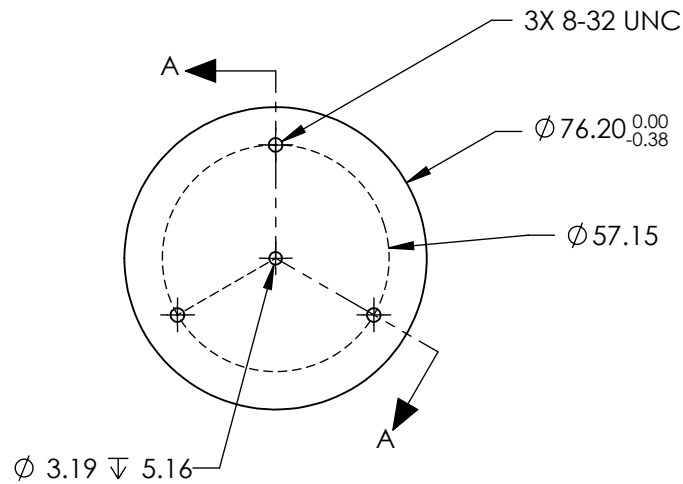
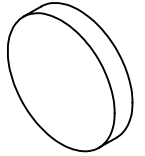


NOTES:

1. SUBSTRATE MATERIAL:
ALUMINUM
2. FINISH (EXCEPT SURFACE S1):
BLACK ANODIZED
3. COATING (APPLY ACROSS CLEAR APERTURE)
 - S1: PROTECTED ALUMINUM
 - R(AVG) >85% @ 400 - 700nm
 - R(AVG) >70% @ 700 - 2000nm
 - R(AVG) >97% @ 2 - 12 μ m
- SURFACE ROUGHNESS: <175 \AA
4. ROHS COMPLIANT

**FOR INFORMATION ONLY:
DO NOT MANUFACTURE
PARTS TO THIS DRAWING**



SECTION A-A

SPECIFICATIONS SUBJECT TO CHANGE WITHOUT NOTICE
DIMENSIONS ARE FOR REFERENCE ONLY

EO® **Edmund Optics**®

	S1	THIRD ANGLE PROJECTION		TITLE	Ø76.2mm, ALUM. COATED, ALUM. SUBSTRATE MIRROR	
SHAPE	CONVEX			ALL DIMS IN	mm	DWG NO
SURFACE ACCURACY AT 632.8nm	$\lambda/2$ RMS					
SURFACE QUALITY	80-50					