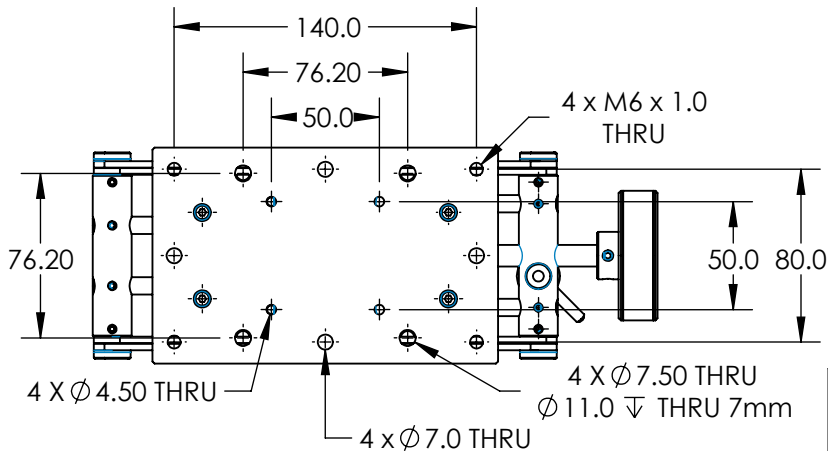
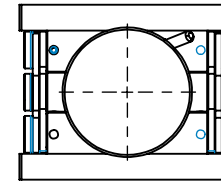
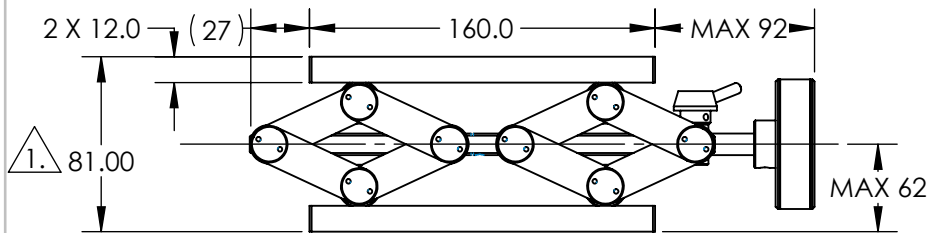
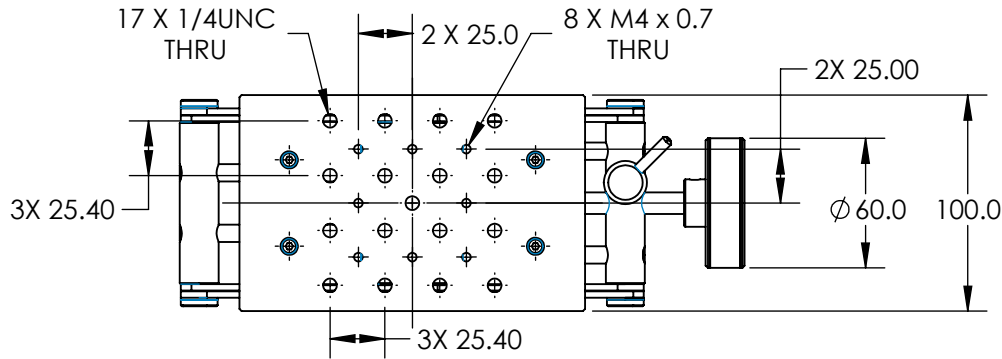


NOTES:

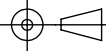
1. TRAVEL: 42mm (MIN 81mm / MAX 123mm)
2. INCLUDES ONE PACKAGE OF (4) M6 x 20mm LONG, FLAT POINT SET SCREWS FOR LOCKING
3. LOAD CAPACITY: 25kg

**FOR INFORMATION ONLY:
DO NOT MANUFACTURE
PARTS TO THIS DRAWING**



SPECIFICATIONS SUBJECT TO CHANGE WITHOUT NOTICE
DIMENSIONS ARE FOR REFERENCE ONLY

EO® Edmund Optics®

THIRD ANGLE PROJECTION 		TITLE	METRIC LABORATORY JACK	
ALL DIMS IN	mm	DWG NO	54687	SHEET 1 OF 1