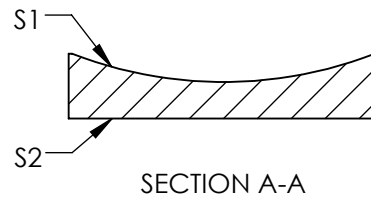
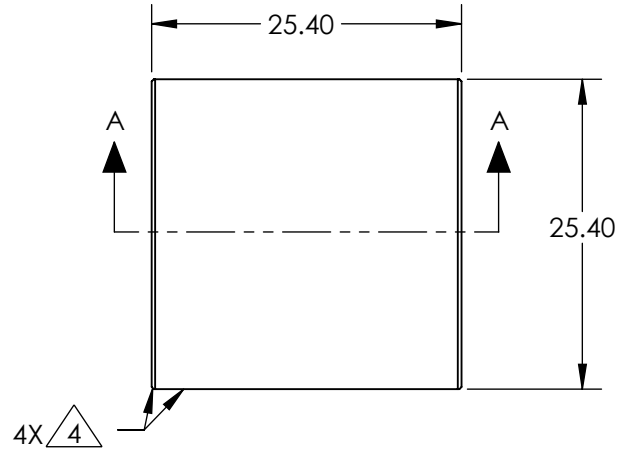
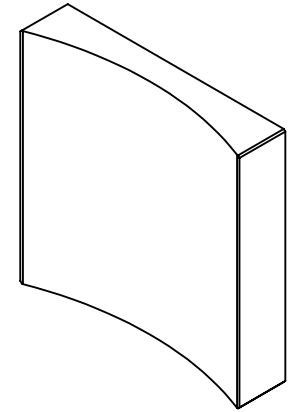


NOTES:

1. SUBSTRATE MATERIAL:
FUSED SILICA
2. CENTERING TOLERANCE (AT 587.6nm):
PLANO AXIS WEDGE: < 3 ARCMIN
POWER ASIX WEDGE: < 3 ARCMIN
AXIAL TWIST: < 3 ARCMIN
3. COATING (APPLY ACROSS CLEAR APERTURE)

S1 & S2:
 $R(AVG) \leq 1.5\%$ FROM 250-700nm @ 0° AOI
 $R(ABS) \leq 1.0\%$ FROM 350-450nm @ 0° AOI

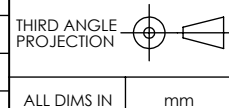
4. FINE GROUND SURFACE
5. POWER, IRREGULARITY, AND SURFACE QUALITY SPECIFICAIONS APPLY ACROSS CLEAR APERTURE
6. ROHS COMPLIANT



**FOR INFORMATION ONLY:
DO NOT MANUFACTURE
PARTS TO THIS DRAWING**

SPECIFICATIONS SUBJECT TO CHANGE WITHOUT NOTICE
DIMENSIONS ARE FOR REFERENCE ONLY

REV. A	S1	S2
SHAPE	CONCAVE	PLANO
SURFACE QUALITY	40 - 20	40 - 20
CLEAR APERTURE	22.86 x 22.86	22.86 x 22.86
BEVEL	PROTECTED AS NEEDED	PROTECTED AS NEEDED



EO® Edmund Optics®

TITLE	LENS CYL SHAPING 25.4mm SQ x -75mm UV VIS		
DWG NO	36114	SHEET	1 OF 1