

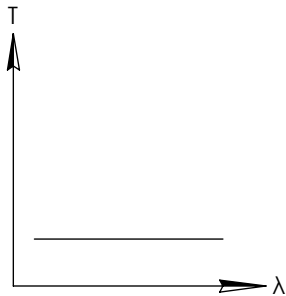
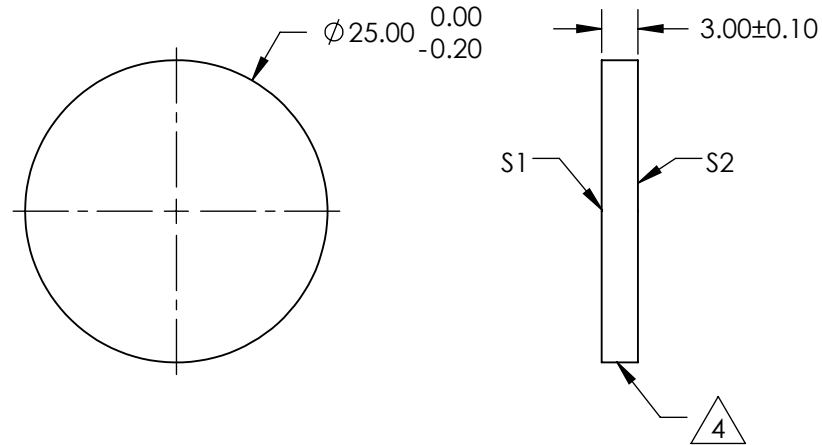
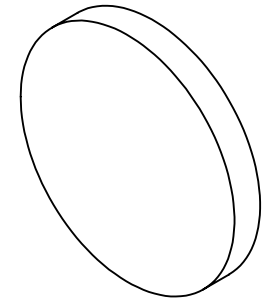
NOTES:

1. SUBSTRATE
FUSED SILICA
2. SURFACE S2 TO BE PARALLEL WITH SURFACE S1 TO WITHIN <3 arcmin
3. COATING (APPLY ACROSS COATING APERTURE)
S1: METALLIC BASED ND, OPTICAL DENSITY (ABS) = 5 FROM 700 - 1100nm
S2: NONE

4. FINE GRIND SURFACE

5. POWER, IRREGULARITY, AND SURFACE QUALITY SPECIFICATIONS
APPLY ACROSS CLEAR APERTURE
6. TRANSMITTED WAVEFRONT DISTORTION P-V @ 632.8nm: $\leq 0.1 \lambda$
7. ROHS COMPLIANT

**FOR INFORMATION ONLY:
DO NOT MANUFACTURE
PARTS TO THIS DRAWING**



NIR ND NEUTRAL DENSITY FILTER

SPECIFICATIONS SUBJECT TO CHANGE WITHOUT NOTICE
DIMENSIONS ARE FOR REFERENCE ONLY

| | S1 | S2 |
|------------------|----------------------|----------------------|
| SHAPE | PLANO | PLANO |
| SURFACE QUALITY | 40-20 | 40-20 |
| CLEAR APERTURE | Ø20.00 | Ø20.00 |
| COATING APERTURE | Ø20.00 | N/A |
| BEVEL | PROTECTIVE AS NEEDED | PROTECTIVE AS NEEDED |



ALL DIMS IN

mm

EO® Edmund Optics®

TITLE

FILTER FS NIR ND REF Ø25mm 5 OD

DWG NO

36437

SHEET
1 OF 1