

NOTES:

1. SUBSTRATE MATERIAL:
FUSED SILICA

2. COATING (APPLY ACROSS CLEAR APERTURE)

S1: Ultrafast Laser
R(AVG) >99% @ 1500 - 1600nm

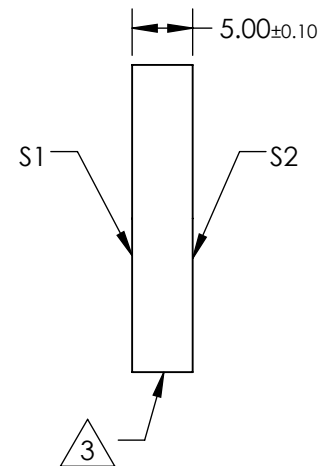
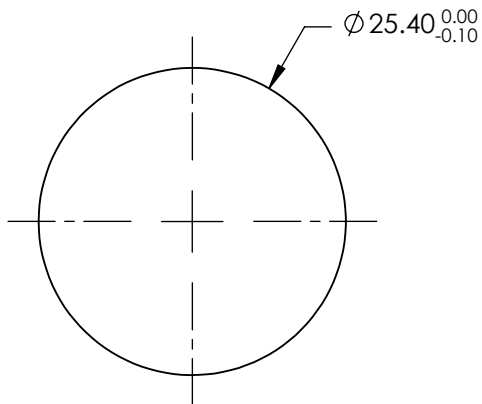
S2: NONE

GDD SPECIFICATION: $0 \pm 30\text{fs}^2$ @ 1470-1610nm

 FINE GROUND SURFACE

4. RoHS COMPLIANT

**FOR INFORMATION ONLY:
DO NOT MANUFACTURE
PARTS TO THIS DRAWING**



SPECIFICATIONS SUBJECT TO CHANGE WITHOUT NOTICE
DIMENSIONS ARE FOR REFERENCE ONLY

REV. A	S1	S2
SHAPE	PLANO	PLANO
CLEAR APERTURE (%)	Ø22.86	N/A
SURFACE QUALITY	20-10	COMMERCIAL POLISH
SURFACE FLATNESS	$\lambda/8$	N/A
BEVEL	PROTECTIVE AS NEEDED	PROTECTIVE AS NEEDED

THIRD ANGLE PROJECTION 

ALL DIMS IN mm

 **Edmund Optics®**

TITLE 1500 - 1600nm, 25.4mm Dia. x 5.00mm Thickness, Ultrafast Broadband Laser Mirror

DWG NO 84617 SHEET 1 OF 1