
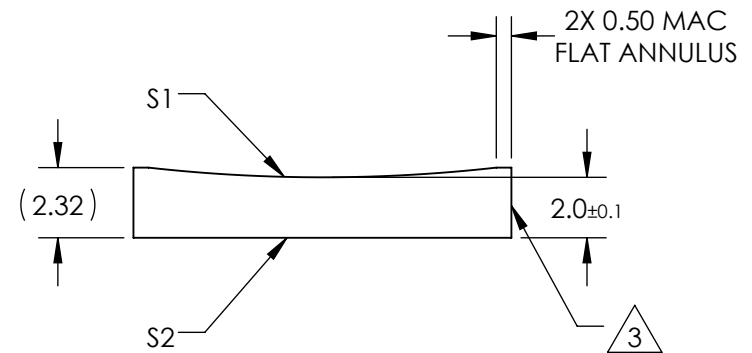
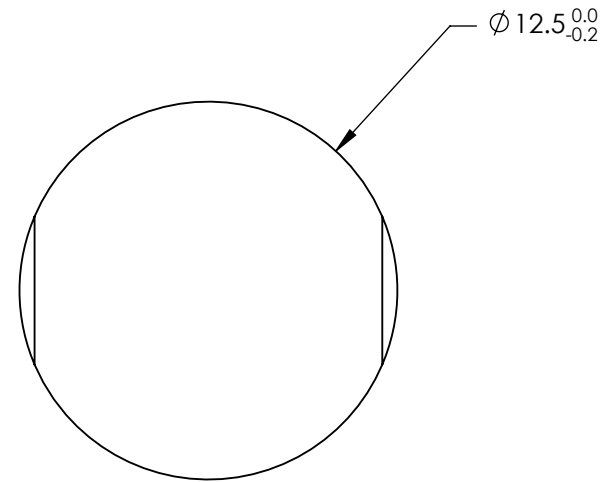


NOTES:


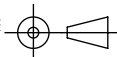
1. SUBSTRATE MATERIAL:
N-BK7
2. COATING (APPLY ACROSS CLEAR APERTURE)

S1 & S2: NONE
3.  FINE GROUND SURFACE
4. POWER, IRREGULARITY, AND SURFACE QUALITY SPECIFICATIONS APPLY ACROSS CLEAR APERTURE
5. RoHS COMPLIANT



**FOR INFORMATION ONLY:
DO NOT MANUFACTURE
PARTS TO THIS DRAWING**

SPECIFICATIONS SUBJECT TO CHANGE WITHOUT NOTICE
DIMENSIONS ARE FOR REFERENCE ONLY

REV. A	S1	S2	EFL	-100	 Edmund Optics®		
SHAPE	CONVEX	PLANO	BFL	-101.32			
RADIUS	-51.68	∞	THIRD ANGLE PROJECTION 				
SURFACE QUALITY	60-40	60-40					
CLEAR APERTURE	Ø11.50	Ø11.50	TITLE 12.5mm DIA X -100mm FL UNCOATED, CYLINDER LENS				
COATING APERTURE	Ø11.50	Ø11.50					
BEVEL	PROTECTED AS NEEDED	PROTECTED AS NEEDED	ALL DIMS IN	mm	DWG NO	47751	SHEET 1 OF 1