

NOTES:

1. SUBSTRATE MATERIAL:
N-BK7

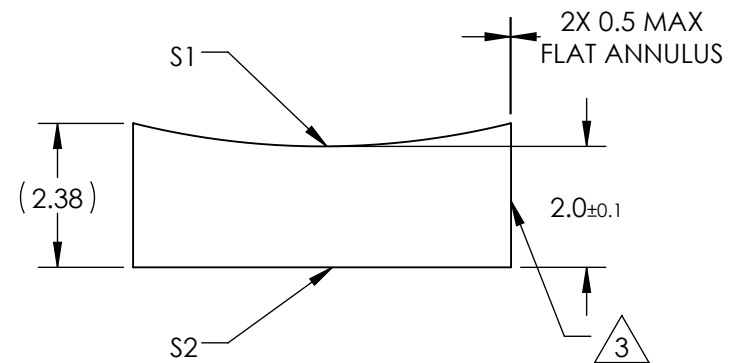
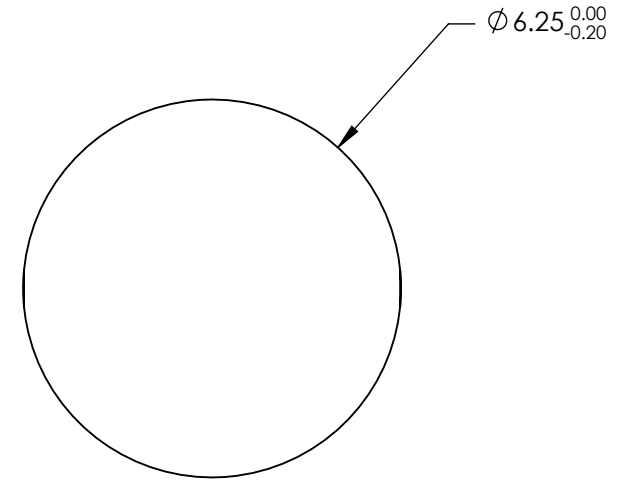
2. COATING (APPLY ACROSS CLEAR APERTURE)

S1 & S2: NONE

3. FINE GROUND SURFACE

4. POWER, IRREGULARITY, AND SURFACE QUALITY SPECIFICATIONS APPLY ACROSS CLEAR APERTURE

5. RoHS COMPLIANT



SPECIFICATIONS SUBJECT TO CHANGE WITHOUT NOTICE
DIMENSIONS ARE FOR REFERENCE ONLY

**FOR INFORMATION ONLY:
DO NOT MANUFACTURE
PARTS TO THIS DRAWING**

| REV. A | S1 | S2 | | | | |
|------------------|---------------------|---------------------|------------------------|--------|-----------------------|--------------------------------------------------|
| SHAPE | CONVEX | PLANO | EFL | -25 | Edmund Optics® | 6.25mm DIA X -25mm FL UNCOATED, CYLINDER LENS |
| RADIUS | -12.92 | ∞ | BFL | -26.31 | | |
| SURFACE QUALITY | 60-40 | 60-40 | THIRD ANGLE PROJECTION | | TITLE | |
| CLEAR APERTURE | Ø5.25 | Ø5.25 | | | DWG NO | 47745 |
| COATING APERTURE | Ø5.25 | Ø5.25 | ALL DIMS IN | mm | | |
| BEVEL | PROTECTED AS NEEDED | PROTECTED AS NEEDED | | | | |