

NOTES:

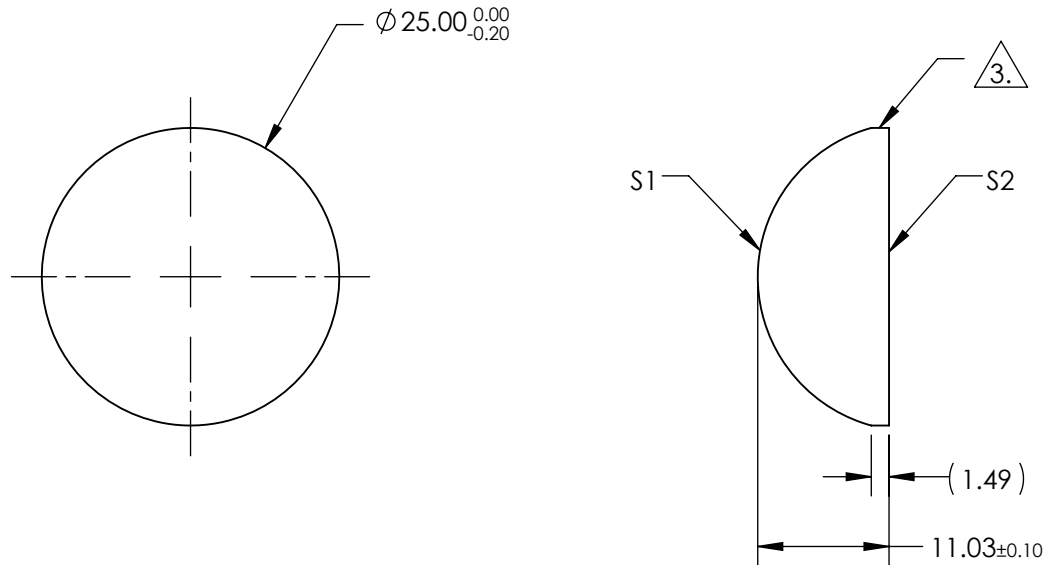
1. SUBSTRATE MATERIAL:
N-BK7

2. COATING (APPLY ACROSS CLEAR APERTURE)

S1 & S2: MgF2 (400-700nm)
R(AVG) ≤1.75% @ 400 - 700nm


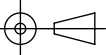
3. FINE GROUND SURFACE

4. RoHS COMPLIANT



**FOR INFORMATION ONLY:
DO NOT MANUFACTURE
PARTS TO THIS DRAWING**

SPECIFICATIONS SUBJECT TO CHANGE WITHOUT NOTICE
DIMENSIONS ARE FOR REFERENCE ONLY

	S1	S2	EFL	25.00	 Edmund Optics®	25mm DIA X 25mm FL MGF2 COATED, CYLINDER LENS	
SHAPE	CONVEX	PLANO	BFL	17.74			
RADIUS	12.96	INFINITY	THIRD ANGLE PROJECTION 		TITLE		
SURFACE QUALITY	60-40	60-40					
CLEAR APERTURE	Ø24.00	Ø24.00	ALL DIMS IN mm		DWG NO	48357	
BEVEL	PROTECTIVE AS NEEDED	PROTECTIVE AS NEEDED					