

NOTES:

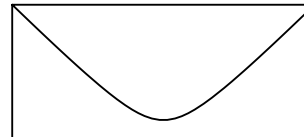
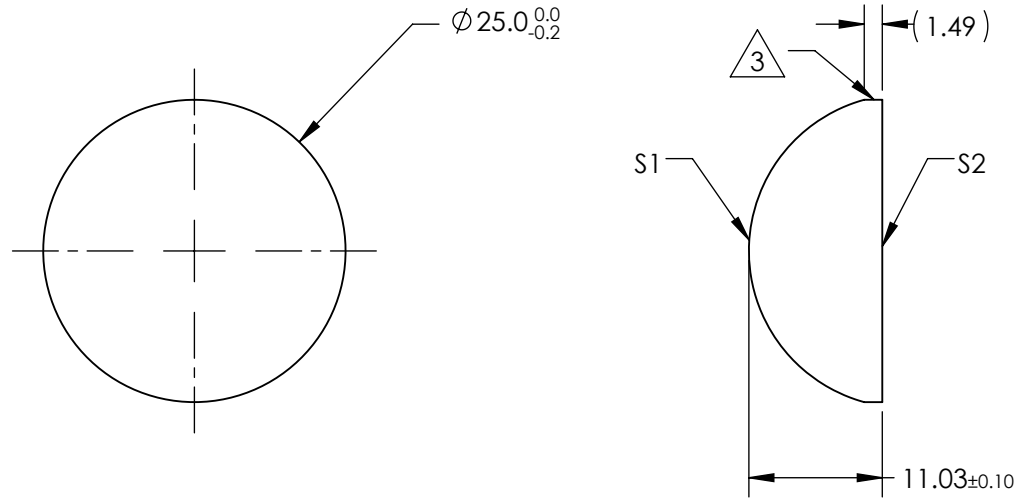
1. SUBSTRATE MATERIAL:
N-BK7
2. COATING (APPLY ACROSS CLEAR APERTURE)

S1 & S2:
LASER V-COAT

R(abs) <0.25% @ 1064nm
R(avg) <1.5% @ 985 - 1140nm


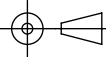
 3. FINE GROUND SURFACE

4. POWER, IRREGULARITY, AND SURFACE QUALITY SPECIFICATIONS APPLY ACROSS CLEAR APERTURE
5. RoHS COMPLIANT



**FOR INFORMATION ONLY:
DO NOT MANUFACTURE
PARTS TO THIS DRAWING**

SPECIFICATIONS SUBJECT TO CHANGE WITHOUT NOTICE
DIMENSIONS ARE FOR REFERENCE ONLY

REV. A	S1	S2					
SHAPE	CONVEX	PLANO	EFL	25±3%	 Edmund Optics®		
RADIUS	12.96	∞	BFL	(17.74)			
SURFACE QUALITY	60-40	60-40	THIRD ANGLE PROJECTION 		TITLE	25.0mm DIA X 25.0mm FL 1064nm V-COAT, CYLINDER LENS	
CLEAR APERTURE	∅ 24.00	∅ 24.00			ALL DIMS IN	mm	DWG NO
COATING APERTURE	∅ 24.00	∅ 24.00					SHEET 1 OF 1
BEVEL	PROTECTED AS NEEDED	PROTECTED AS NEEDED					