

NOTES:

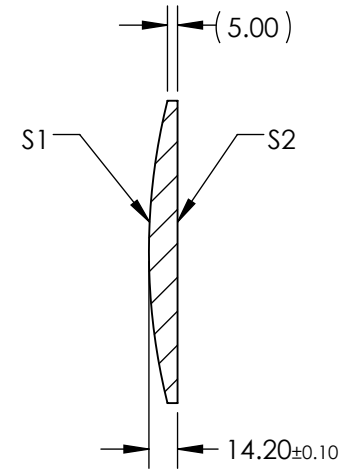
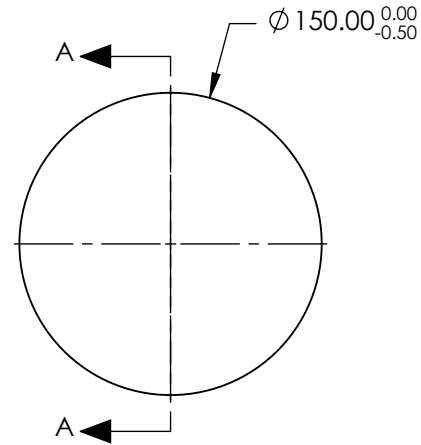
1. SUBSTRATE MATERIAL:  
N-BK7

2. COATING (APPLY ACROSS CLEAR APERTURE)

S1: NONE  
S2: NONE

3. FINE GROUND EDGES


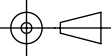
4. RoHS COMPLIANT



SECTION A-A

**FOR INFORMATION ONLY:  
DO NOT MANUFACTURE  
PARTS TO THIS DRAWING**

SPECIFICATIONS SUBJECT TO CHANGE WITHOUT NOTICE  
DIMENSIONS ARE FOR REFERENCE ONLY

REV. A	S1	S2	EFL	600	 <b>Edmund Optics®</b>		
SHAPE	CONVEX	PLANO	BFL	591			
RADIUS	310	∞	THIRD ANGLE PROJECTION		TITLE	150mm DIA X 600mm FOCAL LENGTH, PCX CONDENSER LENS	
CLEAR APERTURE	Ø146.00	Ø146.00	ALL DIMS IN	mm	DWG NO	27511	SHEET 1 OF 1
BEVEL	PROTECTIVE AS NEEDED	PROTECTIVE AS NEEDED					