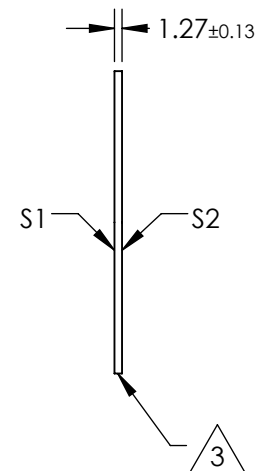
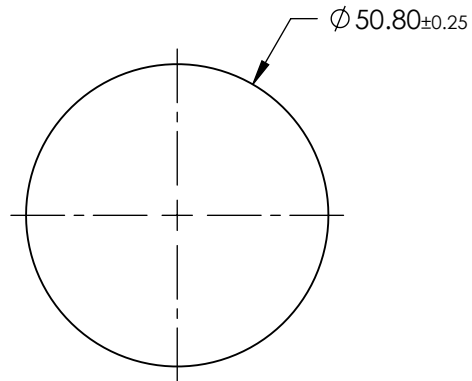
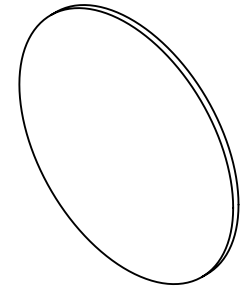


NOTES:

1. SUBSTRATE:
POLYCARBONATE
2. ANTI-REFLECTION COATING (APPLY ACROSS CLEAR APERTURE)
S1 & S2: R(avg) <1% @ 450-650nm
3. FINE GRIND SURFACE
4. RoHS COMPLIANT



**FOR INFORMATION ONLY:
DO NOT MANUFACTURE
PARTS TO THIS DRAWING**

SPECIFICATIONS SUBJECT TO CHANGE WITHOUT NOTICE
DIMENSIONS ARE FOR REFERENCE ONLY

EO® Edmund Optics®

	S1	S2	THIRD ANGLE PROJECTION		TITLE	2" DIAMETER, AR COATED PLASTIC WINDOW	
SHAPE	PLANO	PLANO	ALL DIMS IN	mm	DWG NO	83738	SHEET 1 OF 1
WAVELENGTH RANGE	450 - 650nm	450 - 650nm					
BEVEL	PROTECTIVE AS NEEDED	PROTECTIVE AS NEEDED					