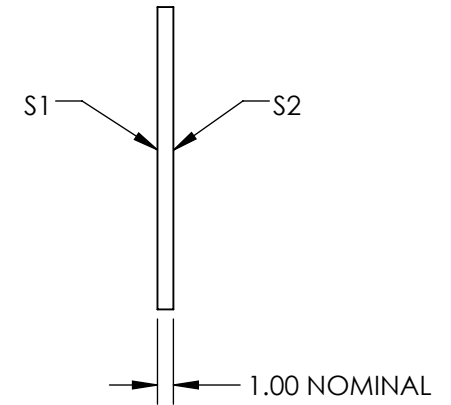
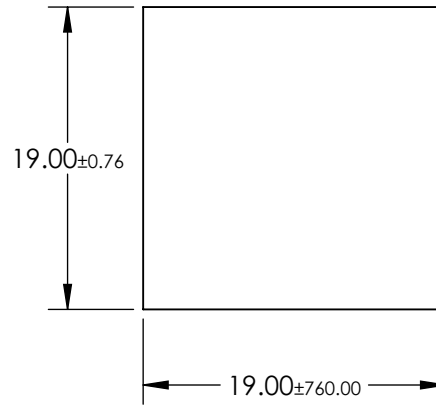
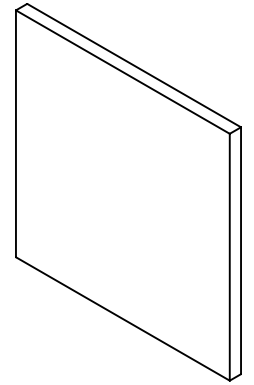


NOTES:

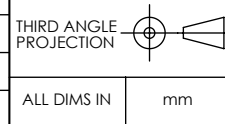
1. SUBSTRATE MATERIAL:
FLOAT GLASS
2. COATING (APPLY ACROSS CLEAR APERTURE)
 - S1: R(avg) >85% @ 400 - 700nm
 - S2: NONE
3. ROHS COMPLIANT



**FOR INFORMATION ONLY:
DO NOT MANUFACTURE
PARTS TO THIS DRAWING**

SPECIFICATIONS SUBJECT TO CHANGE WITHOUT NOTICE
DIMENSIONS ARE FOR REFERENCE ONLY

| REV. A | S1 | S2 |
|--------------------|----------------------|----------------------|
| SHAPE | PLANO | PLANO |
| ANGLE OF INCIDENCE | 45° | N/A |
| SURFACE QUALITY | 80-50 | 80-50 |
| SURFACE FLATNESS | 4 - 6λ | 4 - 6λ |
| BEVEL | PROTECTIVE AS NEEDED | PROTECTIVE AS NEEDED |



| TITLE | DWG NO | SHEET |
|------------------------|--------|--------|
| 19 x 19mm, 4-6λ Mirror | 46650 | 1 OF 1 |