

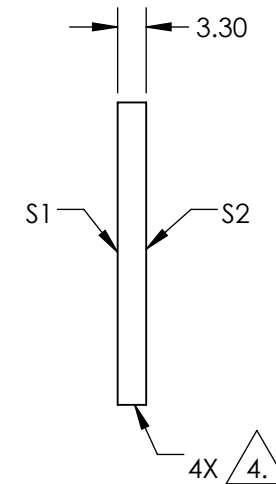
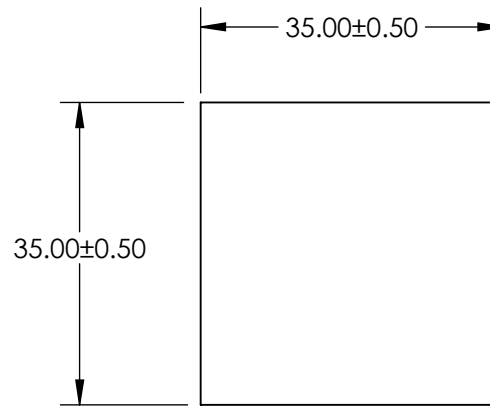
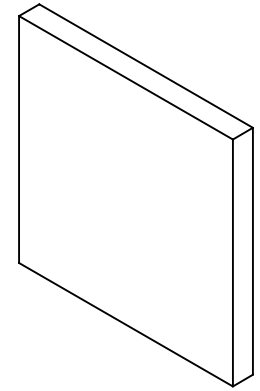
NOTES:

1. SUBSTRATE MATERIAL:
BOROFLOAT®
2. CLEAR APERTURE AND COATING APERTURE
ARE CENTERED ON SURFACES Finish
3. COATING (APPLY ACROSS CLEAR APERTURE)
S1: T(avg) >90% from 425 - 675nm @ 0 AOI
R(avg) >95% from 750 - 1100nm @0 AOI

S2:None

4. FINE GRIND SURFACE

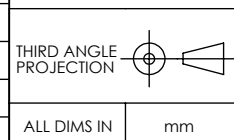
5. POWER, IRREGULARITY, AND SURFACE QUALITY
SPECIFICATIONS APPLY ACROSS CLEAR APERTURE
6. ROHS COMPLIANT



**FOR INFORMATION ONLY:
DO NOT MANUFACTURE
PARTS TO THIS DRAWING**

SPECIFICATIONS SUBJECT TO CHANGE WITHOUT NOTICE
DIMENSIONS ARE FOR REFERENCE ONLY

REV. 001	S1	S2
SHAPE	PLANO	PLANO
SURFACE QUALITY	80-50	80-50
SURFACE FLATNESS	4 - 6λ	4 - 6λ
CLEAR APERTURE	29.75 x 29.75	29.75 x 29.75
BEVEL	PROTECTIVE AS NEEDED	PROTECTIVE AS NEEDED



EO® **Edmund Optics**®

TITLE	35.0 x 35.0mm, 0° AOI, Hot Mirror		
DWG NO	62629	SHEET	1 OF 1