

NOTES:

1. SUBSTRATE MATERIAL:
N-BK7

2. P1 PARALLEL TO P2 <1 ARCMIN

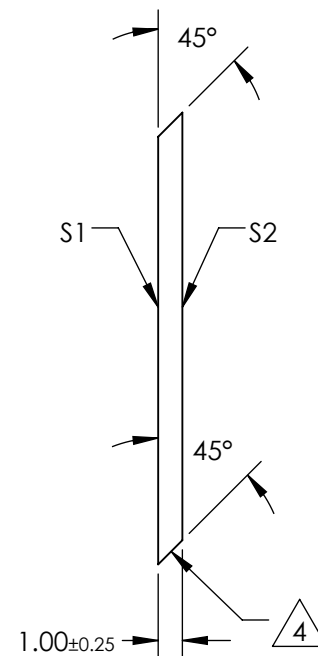
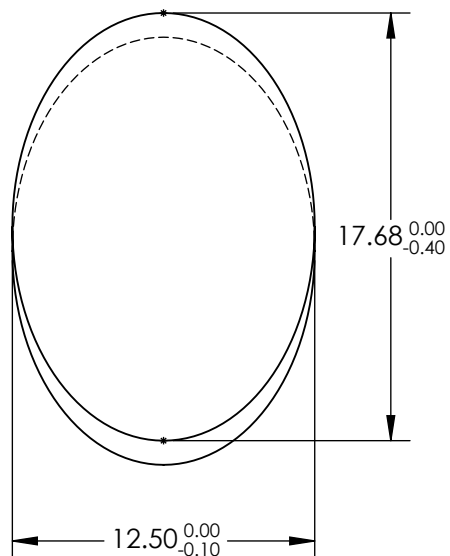
3. COATING (APPLY ACROSS CLEAR APERTURE)

S1: R(avg)= 50% ± 10% @ 700 - 1100nm
R(abs)= 50% ± 5% @ 550nm
T(avg)= 50% ± 10% @ 700 - 1100nm
T(abs)= 50% ± 5% @ 550nm

S2: R(avg) ≤1.0% @ 700 - 1100nm
R(avg) ≤2.0% @ 700 - 1100nm

4. EDGES CUT

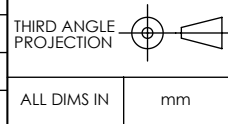
5. ROHS COMPLIANT



**FOR INFORMATION ONLY:
DO NOT MANUFACTURE
PARTS TO THIS DRAWING**

SPECIFICATIONS SUBJECT TO CHANGE WITHOUT NOTICE
DIMENSIONS ARE FOR REFERENCE ONLY

REV. A	S1	S2
SHAPE	PLANO	PLANO
SURFACE QUALITY	60-40	60-40
SURFACE FLATNESS	<1λ	<1λ
BEVEL	PROTECTIVE AS NEEDED	PROTECTIVE AS NEEDED



EO® Edmund Optics®

TITLE	12.5 x 17.68 x 1mm, NIR, ELLIPTICAL PLATE BEAMSPLITTER	
DWG NO	48914	SHEET 1 OF 1