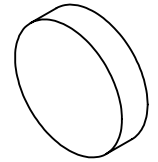


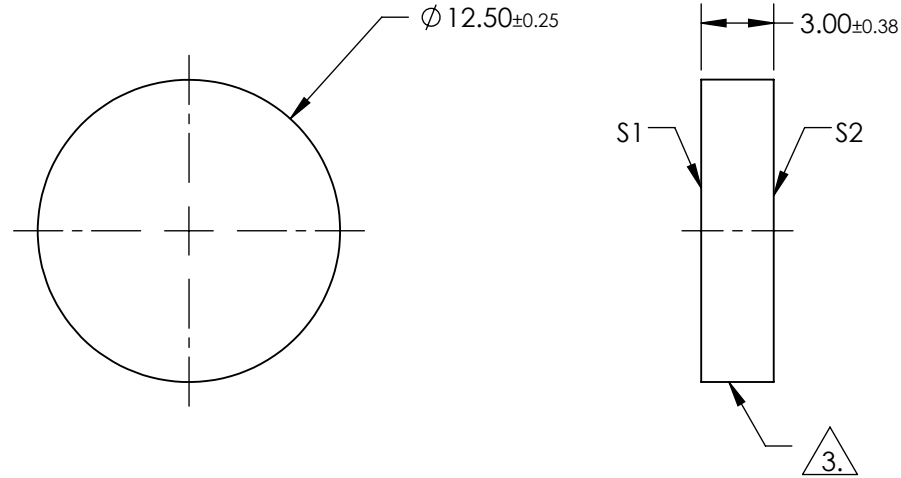
NOTES:

1. SUBSTRATE:
Schott KG-1
2. COATING (APPLY ACROSS COATING APERTURE)
S1 & S2: NONE



 FINE GRIND SURFACE

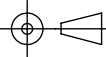
4. WAVELENGTH RANGE: 300 - 2700 nm
5. DENSITY (g/cm³): 2.53
OPERATING TEMPERATURE (°C): 300 Maximum
REFLECTION FACTOR: 0.92
6. ROHS: COMPLIANT



**FOR INFORMATION ONLY:
DO NOT MANUFACTURE
PARTS TO THIS DRAWING**

SPECIFICATIONS SUBJECT TO CHANGE WITHOUT NOTICE
DIMENSIONS ARE FOR REFERENCE ONLY

 **Edmund Optics®**

	S1	S2	THIRD ANGLE PROJECTION 		TITLE	12.5mm Dia. SCHOTT KG-1 Heat Absorbing Glass	
SHAPE	PLANO	PLANO			DWG NO	45719	SHEET
SURFACE QUALITY	60-40	60-40	ALL DIMS IN	mm			
BEVEL	PROTECTED AS NEEDED	PROTECTED AS NEEDED					